

<b>Service:</b>	Special Educational Needs	<b>Name:</b>	David Griffiths
-----------------	---------------------------	--------------	-----------------

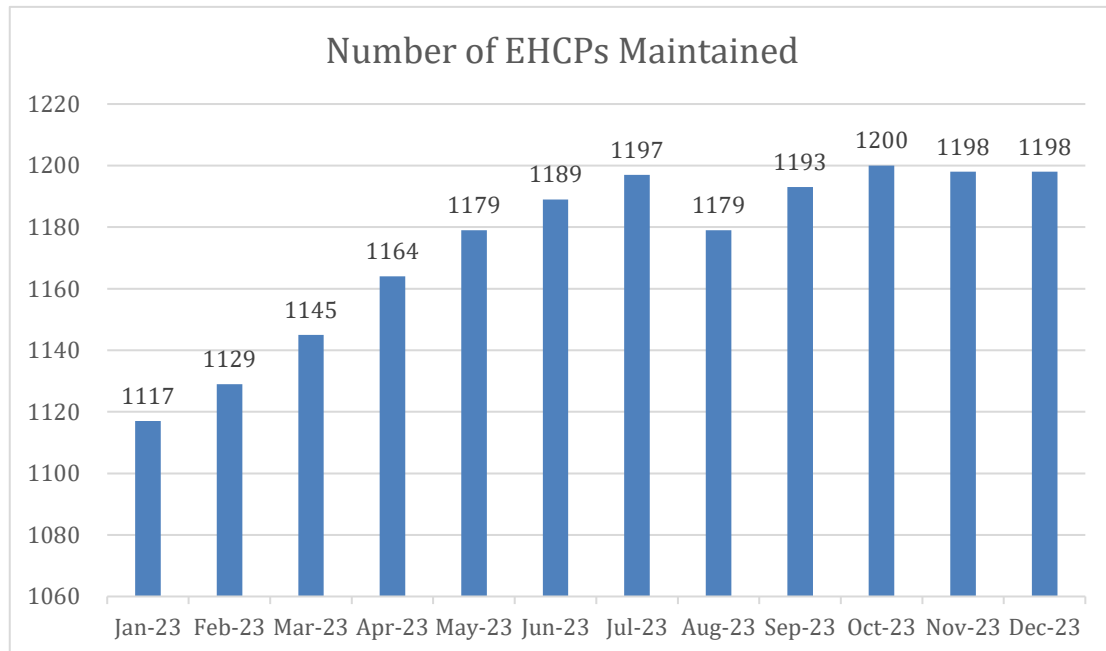
Appendix Heading	Education, Health and Care Plans
------------------	----------------------------------

**Brief Description of Service:**

Carrying out statutory Education, Health & Care Assessments of children and young people with significant special educational needs. Arranging the SEN provision and placement for all CYP with Education, Health & Care Plans. This involves a high level of communication with schools, families and partner services.

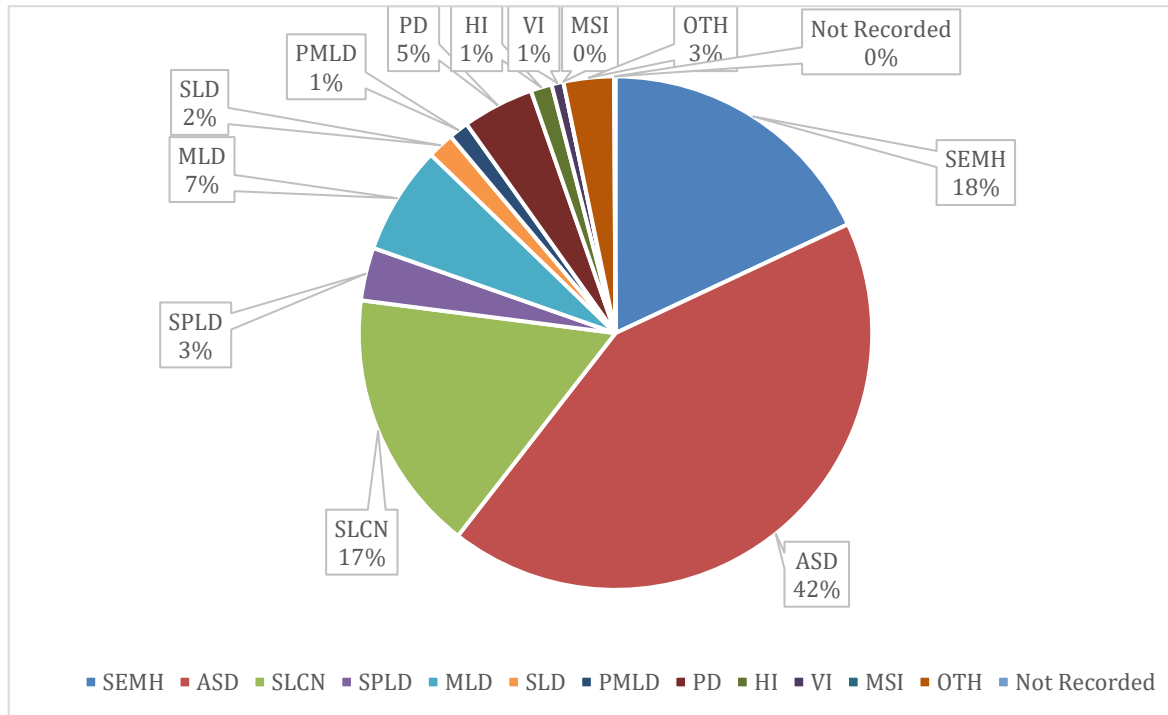
**Data Outputs:**

**Total Number of EHCPs maintained:**



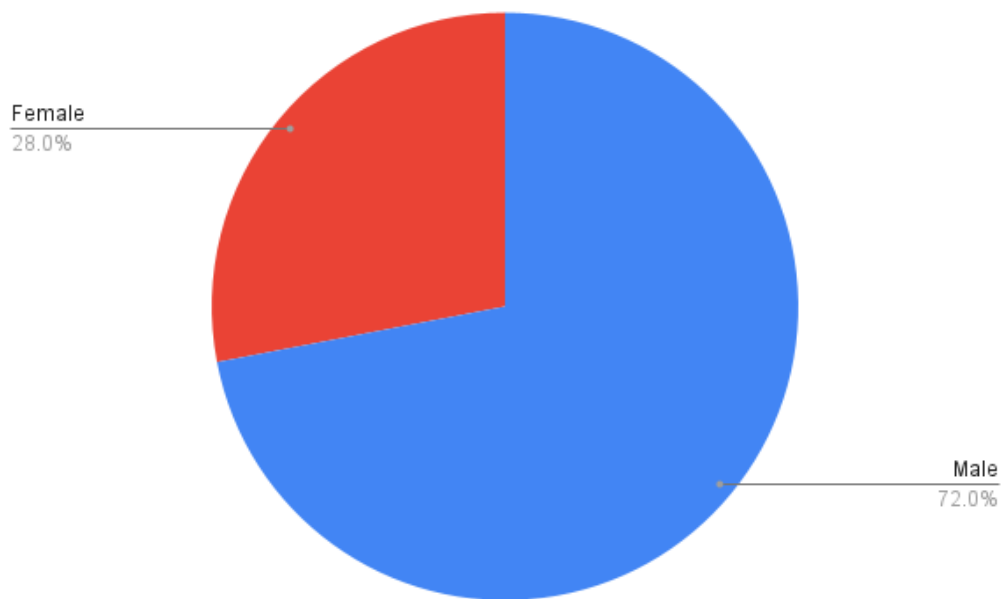
The number of EHC Plans continues to increase significantly, although RBWM is working hard to ensure that the rate of increase remains below the national trend.

### Pupil Primary Needs (Dec 2023)



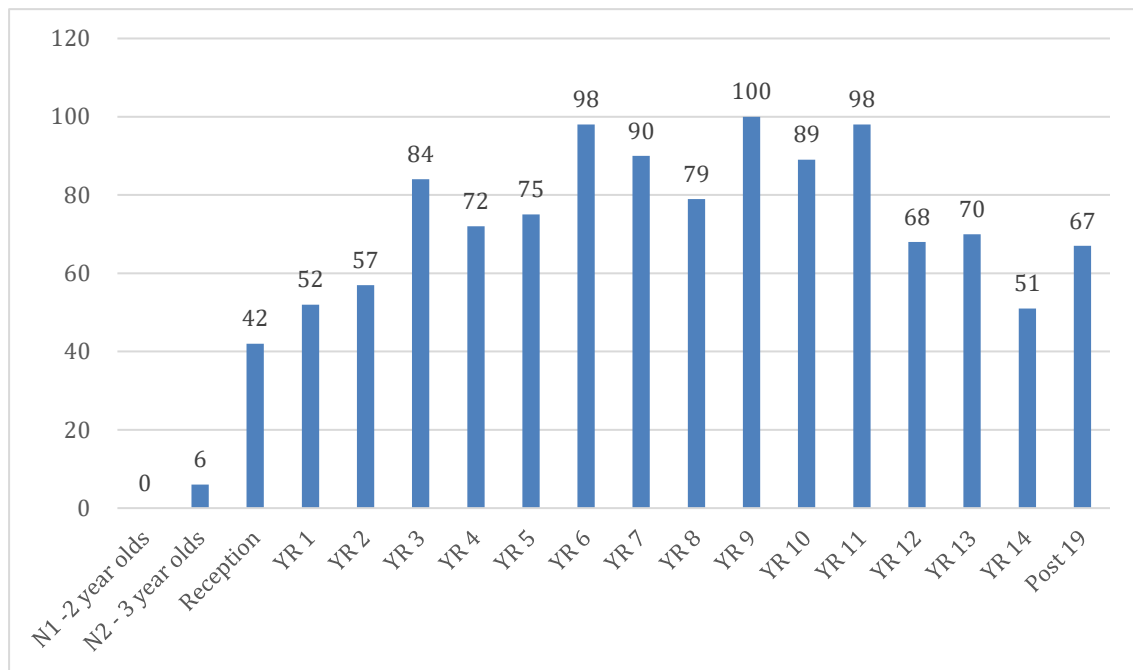
The highest frequency primary need by some distance is Autism, followed by Social, Emotional and Mental Health Difficulties and Speech & Language Needs.

### EHCPs by gender:



There continues to be many more EHCPs for boys than girls, this in line with national statistics.

### EHCPs by School Year



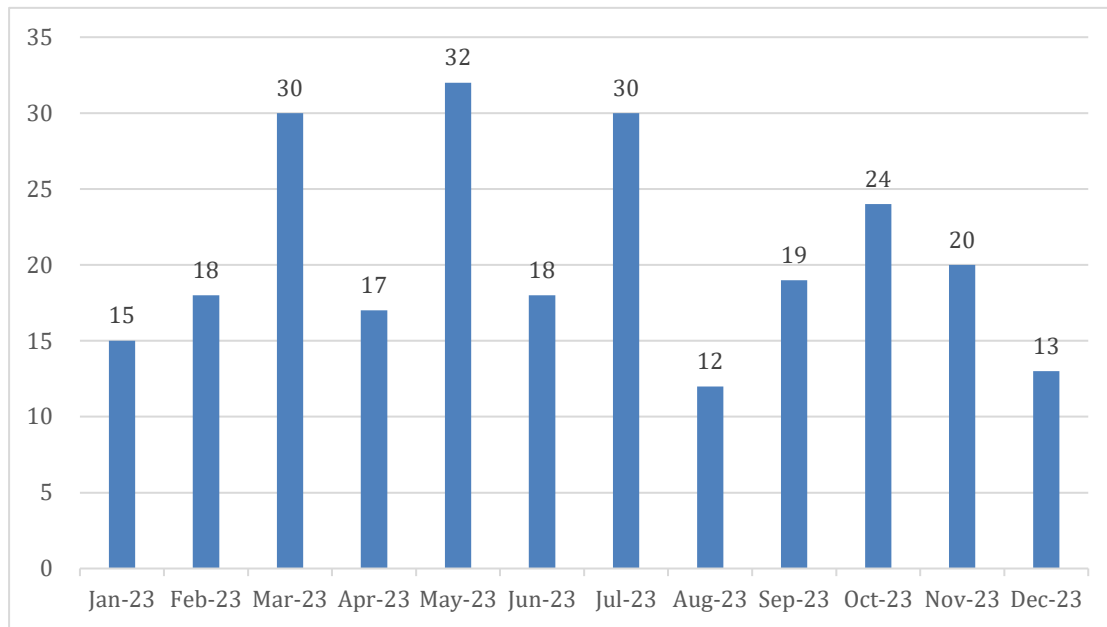
EHCP numbers increase through primary phase, remain more constant during secondary and reduce after age 16 as young people start to move on from education into adulthood.

## Placement Type

(MAIN) Mainstream school: LA maintained (including foundation schools)	250	21%
(M/S Academy) Mainstream school: academy	226	19%
(MSPEC) Special school: LA maintained (including foundation schools)	199	17%
(FE) Post 16: General FE and tertiary colleges/HE	118	10%
(ISS) Special school: Independent special schools	84	7%
(SPEC AC and SPEC Free) Special school: academy/free	64	5%
(EOTAS) Educated elsewhere	52	4%
Mainstream school: academy (resourced provision)	40	3%
(M Free) Mainstream school: free school	31	3%
(IND) Mainstream school: independent school	21	2%
Mainstream school: LA maintained (resourced provision)	21	2%
NEET	21	2%
(AP Academy) AP/PRU: Academy 9	18	2%
(NMSS) Special school: Non-maintained	16	1%
null	9	1%
(Special Post 16) (ISP) Post 16: Specialist post-16 Institutions	8	1%
Mainstream school: LA maintained (SEN Unit)	8	1%
(Early Years) Non-maintained early years settings	7	1%
Apprenticeships	3	0%
(SPECIAL Post 16) (ISP) Post 16: Specialist post-16 Institutions	1	0%
Child Missing Education - CME	1	0%

The majority of CYP with EHCPs are placed in state-funded mainstream and special schools and Further Education colleges. Around 12% of CYP with EHCPs are educated in the independent specialist sector, which tend to be the highest cost placements.

## EHC Assessment Requests Received



The LA continues to receive a high number of requests for EHC Assessments across the year. We complete the vast majority of EHC Assessments within the statutory 20-week timeframe, compared to the national average of around 60% within timeframes.

### **Other issues and next steps**

We have continued to develop our recording, monitoring and reporting of a range of SEN data via data dashboards and monthly reports.

Our least strong area of performance relates to processing EHCP Annual Reviews in a timely way. Over 1,200 Annual Reviews are received by the team every year and each one requires reviewing and formally responding to. This reflects the picture across all SEN Services nationally; however we are exploring potential staffing solutions to help address this issue.